



Trust Ultra-Span Steel Truss

Affordable • No Maintenance • No Wastage • Eco-Friendly • Easy Installation



**SUPPLIED
OVER
1,000,000 SQM
OF ROOF
IN EAST AFRICA**

A member of the



About Us

Safal Building Systems Ltd is a sister company of SAFINTRA RWANDA

It specializes in the design, manufacture and supply of pre-engineered steel trusses.

About Ultra-Span

Ultra-Span is the brand name of our pre-engineered, cold formed, steel roof trusses manufactured from high tensile Zincal steel of thickness 0.5 mm to 2.0 mm. It is an advanced, engineered solution that is quick and easy to deliver and assemble on site. It's strong, durable, affordable and structurally stable.

Design & detailing is done using software developed and patented for the system. The following aspects are considered when designing the trusses:

- Set of architectural or structural drawings (floor plan, roof plan, elevations and sections)
- Pitch, roof cover and overhang.
- Special loading such as solar water heating.

Applications

Ultra-Span is perfect for:

- Residential applications;
- Institutional applications; and
- Commercial/industrial applications.

Advantages



Reliable Quality Solutions

Fully pre-engineered, supported by specialized software, made from high tension coated steel.



Ultimate Design Flexibility

Higher spanning capabilities, greater design flexibility for bespoke shapes, superior aesthetics. Ultraspan is compatible with typically all kinds of roof cover material.



Easy to Construct

Easy and quick to assemble and erect on site.



Environment Friendly

Light gauge steel is 100% recyclable, termite and fire resistant.

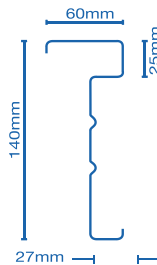


Light Weight

Ultraspan is made from light gauge steel hence the weight does not put much pressure on the structure.



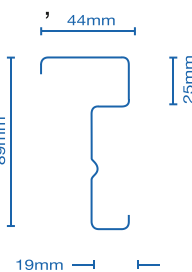
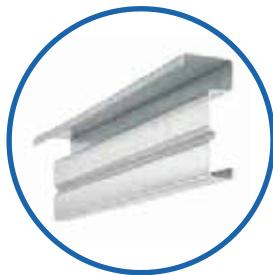
Product Specifications



CHORDS

USC140 x 1.0, 1.2 or 1.6 mm Steel
(Suitable for large spans/girders)

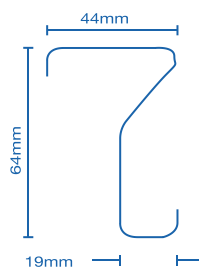
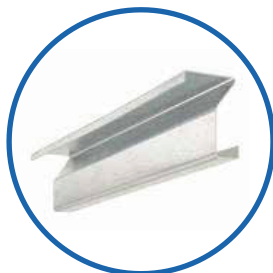
Weight Kg/m
Approx: 2.07, 2.49 & 3.34 Kg/m
respectively



CHORDS

USC89 x 1.0, 1.2 Steel
89 mm in 1.0 mm or 1.2 mm Steel

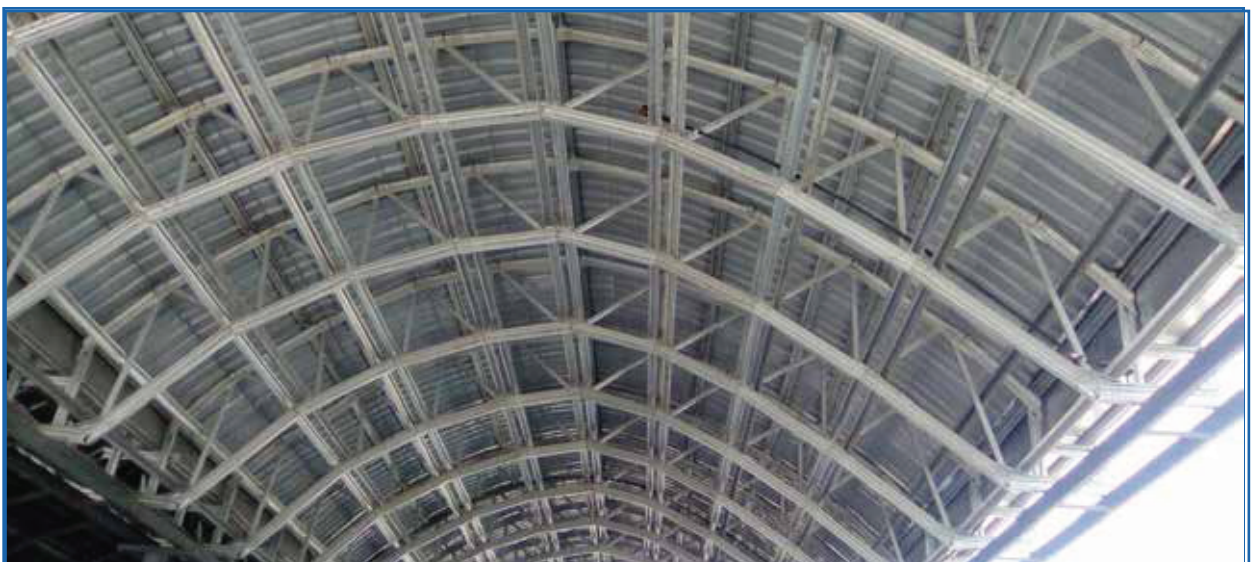
Weight Kg/m
Approx: 1.44 & 1.73 Kg/m



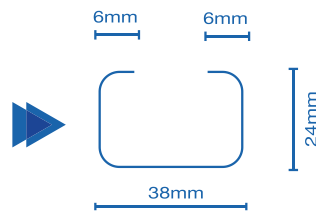
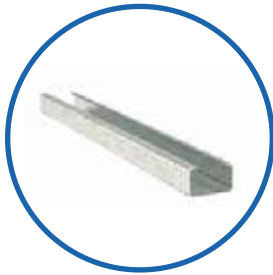
CHORD

USC64 x 0.8 or 1.0 mm Steel
64 mm Chord in 0.8 mm or 1.0 mm Steel

Weight Kg/m
Approx: 0.91 & 1.13 Kg/m respectively



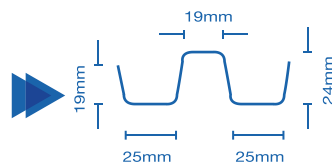
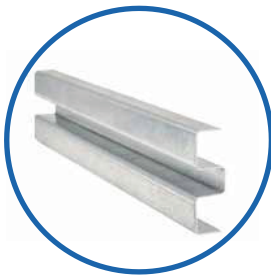
Product Specifications



WEBS

USW38 x 0.8 or 1.0mm Steel
38 mm web in 0.8 mm or 1.0 mm Steel

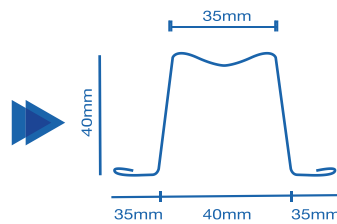
Weight Kg/m
Approx: 0.56 & 0.70 Kg/m respectively



WEBS

USw76 x 0.8 or 1.0 or 1.2 or 1.6 mm
76 mm Web in 0.8 mm, 1.0 mm,
1.2 mm & 1.6 mm Steel

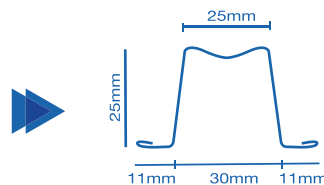
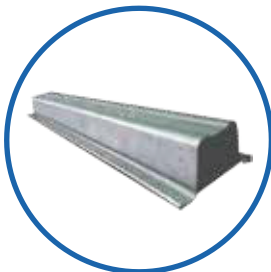
Weight Kg/m
Approx: 0.90, 1.12, 1.35 & 1.8 Kg/m respectively



HAT CHANNEL

40 x 0.5 mm

Weight Kg/m
Approx: 0.6 Kg/m



BATTEN

25 x 0.5 mm

Weight Kg/m
Approx: 0.42 Kg/m



Connection Details



TRUSS TO TRUSS CONNECTIONS



CEILING BRANDING OPTIONS



STEEL PURLIN/BATTEN



STEEL PURLINS ON TIMBER ROOF



STEEL PURLIN/BATTEN





Safintra Rwanda Limited Plot 2156 & 2157,
 Prime Economic Zone, Phase 1, Masoro, Gasabo Dist.
 P.O. Box 6959, Kigali-Rwanda. Tel: +250 727 888070, +250 788 317072
 Email: sales.safintrarwanda@safalgroup.com
 Web: www.safintra-rwanda.com

